

Anniversaries

. . . Printing---50 Years

. . . New Enterprise---100 Years

. . . Ephrata Press---200 Years

Thanks To Our Many Friends Through The Years...



Frank R. King

Every town owes much to its businessmen. It is their payrolls that enable the laborer to furnish his table.

* * *

The kind of stationery used is a good index of a man's business ability and social attainment. Call at the office in New Enterprise and let us furnish forms suitable for your needs.

1894—PRINTING 50 YEARS—1944

Late in the year 1893, Mr. Obed Snowberger, last member of the S. D. B. Snow Hill Monastic Society, in Franklin County, Pa., found himself no longer able to continue in the printing business by reason of his advanced age. Therefore he offered to donate his press and type to the Salemville branch of the church in Bedford County. This offer appealed very favorably to a number of the most active members of the church. A committee went to Snow Hill to complete the acceptance and arrange for shipment of the press. The press, type, and all the equipment arrived at Salemville in February, 1894.

No person in the community possessed any knowledge whatever, of the art of printing. Many hours were spent in the new experiment by several of the most enthusiastic among those interested, but the secret of how to produce the printed page remained a hidden mystery.

Finally, a publishing committee was formed. They procured the service of Mr. D. Miles Walter, of Hopewell, Pa., who knew the fundamental principles of the printing art. The original purpose for which the press was donated was now attempted, that of publishing a small church paper. On the 4th day of April, 1894, the first issue christened the "Advocate and Herald" was launched into circulation. Week after week it appeared and grew in size until it became a four-column quarto. The editor was the Rev. D. C. Long, a fluent writer and translator of the German language. It soon became the pride of the community and was looked upon as a great undertaking. The difficulties and responsibilities connected with such a venture as this could not be fathomed by those unfamiliar with the requirements necessary to continue the publishing business. Ere long, the committee became involved with problems which taxed their ingenuity to the very point where continuation seemed almost impossible. Printing a paper proved far more expensive than was anticipated and the liabilities soon overbalanced the resources. After repeated efforts to liquidate the debt, and seeing no hope for the future, the outfit was sold to C. L. King, thus relieving the church of any further obligations.

The "Advocate and Herald" was continued, but took on the form of a local newspaper. Thus far, the paper was printed on the old "Ephrata Hand Press" sent from Snow Hill. This was a very slow and tedious performance. The new owner purchased a 10x15 platen press in 1895, after which the paper was printed one page at

a time by foot power on the treadle. Under various trading captions, the paper was continued weekly until August 11, 1898, which issue contained notice of suspension. From that date to the present day, the office has been a producer of job printing.

The names under which the office operated were: Salemville Publishing Co., C. L. King, King and Metzger, King Bros., Frank R. King Printing Company. In the month of May, 1894, the writer and present owner, then a youthful school teacher, was persuaded to enter apprenticeship to D. Miles Walter, then employed by the Publishing Company. After a few weeks' experience, Mr. Walter asked the Company to relieve him, which placed the writer in position of office foreman. From that date, he has been in continual connection with the office. In 1906, a well-equipped office at Osterburg was purchased and added to the plant at Salemville. After the death of C. L. King in 1925, the original equipment also became the property of the writer. The present title of Frank R. King Printing Company, was then chosen in recognition of members of the family, who, as they grew up, assisted in the work of the office.

The printing office was first set up in the upstairs of the brick church near Salemville, later moved to the old school house on the farm now owned by H. L. King. In 1895 it was moved to a new building erected in Salemville, where it remained until 1925. In that year it was moved to its present home in New Enterprise. In 1938 the owner retired from the teaching profession, having served thirty-six years as a teacher. Since that date, printing has been followed exclusively.

We are now equipped with three job presses, modern type faces, and other equipment which give facilities for most kinds of job printing. A linotype has recently been installed and will be in operation in the near future.

Thus, within a span of fifty years, embracing the greatest age of invention and industrial improvement in our country, we have witnessed a printing plant started to function in the back woods, with a primitive hand press and obsolete type and no equipment, gradually develop and transform itself into a modern plant; also a community taught to use and appreciate the value of printing.

We heartily thank our large list of patrons and friends who have given us of their patronage, thus making possible our effort to maintain a printing plant in the community.

FRANK R. KING.

100—NEW ENTERPRISE—100

Nestled in the southern end of beautiful Morrisons Cove, near the head waters of the cool sparkling Three Spring Run, is the busy little village of New Enterprise. Being located near the center of South Woodbury Township, it has become a convenient business place for the prosperous agricultural and dairying area surrounding it. The early settlers in this region showed much interest in education, religion and music, and took a great pride in the acquisition of beautiful homes. These high standards of life have been passed from generation to generation until the present day and still remains a marked characteristic of the people of the community.

To review the accomplishments and activities of the past hundred years would furnish sufficient material to fill a fair-sized book. We will, therefore, undertake to mention here only a few historical facts connected with the transition of a spot in the wilderness of forest and ground oaks, to one of the principal small business centers within the county.

From the "History of Bedford, Somerset and Fulton Counties", we glean the following information: In the latter half of the 18th century, settlers rapidly poured into this part of Morrisons Cove. Many farms were marked out and home sites selected. Thus was the foundation laid for a great community, but it was not until 1844, when Simon Beard built the first house in what later became the village of New Enterprise. David Buck built and operated the first store in 1849, and became the first postmaster in 1863. Previous to that date, the place was known as "Beard's Cross Roads." The Home Library Association was formed and chartered in 1881. It was the only public library in the county.

Many business places and shops were soon established to supply the needs of a busy community. The lapse of time wrought many changes in the needs and materials of the surrounding populace, consequently, these shops and business places soon gave way to new establishments and other needs. Many of these early sites are still within the memory of the older residents. We frequently hear them talk of the old lath mill, carriage shops, blacksmith shops, tailor shop, cabinet maker shop, barroom, cider press, sawmill, clover mill tannery, etc.

Let us now take a brief look at New Enterprise as it appears today. We find but a very few of the old landmarks still in operation. In their places are functioning such institutions as The New Enterprise Bank, New Enterprise Stone and Lime Company, Co-operative Light Company, garages, up-to-date stores, printing office, modern shoe shop, barber shop, consolidated school, high school, and other professional interests. Instead of the muddy streets, boardwalks, unpainted buildings, etc., we find paved roads, concrete sidewalks and costly substantial buildings, well-painted and beautiful homes. To add to the comfort of the townspeople and make life more attractive, many conveniences have been brought to the town, and community as well. Among these are: water piped from the mountain, street lighting, two mails daily direct from Altoona, and many other modern appliances are thus easily obtainable. The payroll in the various offices for clerks, mechanics, bookkeepers, salesmen, stenographers, teachers, etc., totals many thousands of dollars each month.

Most of these improvements and achievements have been accomplished within the past twenty-five years. We wish here to pay tribute to the wide-awake citizens who possessed the vision to sponsor these various undertakings. Well may they be styled as public spirited men who were willing to risk their own possessions and earnings to bring about better living conditions in the town and community, as an expanding society demands. They deserve to be honored and remembered as public benefactors.

It seems also in good taste to say a word here in behalf of the many noble sons and daughters of New Enterprise who have gone to other fields to labor, and by their success in the professions and business, have bestowed much coveted honor on the place of their nativity. Space does not permit us to mention their names and line of activity, but to all these a grateful community expresses their appreciation of your noble work and life and points with pride to your attainments.

Last, but not least, with a deep sense of gratitude, we pause in silence to pay homage to the noble boys who are now serving in the service of our country to defend the flag and institutions dear to every American citizen.

OUR SCHOOLS

The fine spirit of education which has been a dominating factor in the development of our busy town is well demonstrated by the progress of our schools.

As early as 1852, a literary society was organized in the school house near New Enterprise. In 1871, the LaCledé Literary was organized which functioned until High School activities replaced it.

The Independent School District was constituted at the April term of court, 1881. The two-story brick building, now used as a shop by the Vocational Department, was dedicated December 2, 1881. This building, with its graded school, became the educational center of the township. Besides housing the children for the winter term, it also was used to provide for a Summer Normal School for the training of teachers. Many prominent young men and women in the role of teaching and other professions, received training here. Thus the spirit of education advanced. Space forbids the mention of many other developments.

The ever-increasing demand for better education facilities resulted in the establishment of our present High School in the year 1916. The first principal was Mr. Ross T. Snider, who tutored the initial class of six pupils in the township school building at Pine Hill. Plans for the erection of a new building were already under way. In the year 1918, the new building was dedicated. It was christened the J. Leonard Replogle High School in honor of our most favorite son, J. Leonard Replogle, whose generous donation has made both the High School and the present grade school buildings possible.

In the year 1923, the six-room grade school building was erected the Independent District dissolved and the township schools completely consolidated. Previous to this date, only partial consolidation was possible on account of inadequate facilities. Five township schools had remained open.

We now have one of the finest school systems in the county of which we are justly proud. Five buses daily transport the pupils from all parts of the township and a fair patronage of the High School is enjoyed from adjacent townships.

To our children and posterity, we extend the heritage of a free and useful education.

VIVE LA REPLOGLE.

CHURCH OF THE BRETHREN

The only church located at New Enterprise is the Church of the Brethren. The exact date of the organization of this congregation of members is unknown, but Brethren from Franklin and Fulton Counties came into the Southern Cove area possibly as early as 1760. In 1785, through a deed signed by Benjamin Franklin, a large tract of land was conveyed to two of the church leaders, Samuel Ulery and Jacob Brumbaugh. The present New Enterprise Church building stands on a part of the original Ulery tract. Although worship was held in private homes, the congregation was no doubt progressing as an organization on or soon after 1800, with Samuel Ulery as the presiding elder. He died in 1822 and is buried in the New Enterprise Cemetery.

The first church building was erected in 1840 on the site where the present church is located. The building served the needs of the members until 1878 when it was replaced by the one now in use. Changes and improvements have been added to both the basement and main auditorium from time to time.

The congregation secured a full-time pastor in 1918. Since that time, the following have served as pastors: H. Stover Kulp, G. E. Yoder, D. O. Cottrell, and W. N. Stauffer, the present pastor. The church maintains an active local program, supports a foreign missionary and contributes worthily to the world-wide work of the denomination. The size and location of the building have made it a logical place for numerous public meetings and conventions.

A rather extensive remodeling project has been approved by the church recently, and when this work can be completed, the church and community will be able to experience much more of convenience, comfort and inspiration in public worship.

THE NEW ENTERPRISE STONE AND LIME COMPANY

NEW ENTERPRISE, PA.

With home office in New Enterprise, was organized in 1924 as a partnership with J. S. Detwiler and Paul I. Detwiler partners. Under it were operated a crushing plant and lime kilns at Waterside, Bedford County. Crushed limestone and agricultural burned lump lime were the chief products.

In 1928, a Sand Plant was purchased at Everett, Bedford County, located just north of the Borough, where building sand and sand for mines was manufactured. This plant was remodeled and the capacity increased after it was acquired.

In 1930, the Partnership was changed to include Dale W. Detwiler and Arthur T. Furry, in addition to the former partners, J. S. and Paul I. Detwiler. The new partnership purchased a stone quarry at Rodman, Blair County, one mile north of Roaring Spring Borough. That year the plant was remodeled completely to increase the capacity of crushed limestone to 600 tons per day.

In 1934, the Partnership purchased from the Everett-Saxton Company, the Ashcom Plant which is two miles west of Everett, Pennsylvania. This plant manufactured crushed limestone, Fort Bedford Hydrated Lime and Fort Bedford Pulverized Limestone. In 1939, the limestone crushing plant capacity was increased to 1,000 tons per day by adding a log washer, four new shaker screens, new bins and one new crusher. This plant furnished approximately 350,000 tons of crushed limestone for the Pennsylvania Turnpike in 1939 and 1940. Two ready-mixed concrete and batch bins were added in 1939 to furnish batches for the bridges on the Pennsylvania Turnpike through Bedford County. The cement, sand and crushed stone for the Rays Hill turnnel was also furnished. The cement was shipped from various plants in the state, the sand was shipped from Williamsport to Ashcom and both were hauled by truck to the

tunnel.

In 1940 a bituminous plant was installed in the Roaring Spring plant for the manufacture of Amiesite and Colprovia.

In 1941, a change in Partnership was made with the purchase of the Arthur T. Furry share and the inclusion of Emmert I. and C. Galen Detwiler. One of the ready-mixed plants installed at Ashcom in 1939 was moved to the Roaring Spring plant and a mixer truck purchased to supply ready-mixed concrete in Bedford and Blair Counties.

In 1942, the Pulverizing Lime plant capacity at Ashcom was increased from 24 to 500 tons per day by adding one Hardinge Ball Mill and three Bradley Roll Mills. The plant has been operating on a twenty-four hour basis for the past two years.

In 1943, the McConnellstown Quarry, Huntingdon County, was purchased and a complete new crushing plant installed including a log washer for the manufacture of crushed limestone. This plant has a capacity of 600 tons per day. The Frankstown Quarry, Blair County, formerly owned by Gildea Company, was also acquired that year. The Frankstown Quarry has not been operating since that time.

In 1944, a quarry at Orbisonia, Huntingdon County, was purchased with machinery and equipment for producing crushed limestone. Its capacity is 500 tons per day. That same year a ready-mixed batch plant was installed at McConnellstown for the delivery of ready-mixed concrete in Huntingdon County and vicinity.

The Partnership owns and operates in addition to the above quarries three mixer trucks, twenty-five dump trucks, including a Sterling Tractor with lowboy trailer used to move heavy road building machinery, six gas and diesel shovels, three road rollers, one Barber-Greene black-top paver, two Barber-Greene bucket loaders, two Bulldozers, one with a carry-all attachment, one Caterpillar Grader, tandem drive, and one Well-drilling outfit mounted on a Chevrolet truck.

Many changes have been made in the Partnership and its operations in the past twenty years and now includes a Father and four sons, namely: J. S. Detwiler and Paul I. Detwiler, New Enterprise, Pennsylvania; Dale W. Detwiler, Roaring Spring; Emmert I. Detwiler, Huntingdon; and C. Galen Detwiler, Everett, Pennsylvania.

THE NEW ENTERPRISE BANK

NEW ENTERPRISE, PA.

Opened for business January 3rd, 1912. The Board of Directors were: C. O. Brumbaugh, President; J. H. Snoeberger, Vice-President; S. L. Buck, Secretary; D. B. Snowberger, I. S. Kagarise, J. H. Brown, John S. Guyer, S. B. Fluke and O. R. Myers.

The above-named were the active promoters of the bank and with but one exception, served continuously and faithfully until removed by death. Prof. Myers requested to be relieved because of other pressing duties, however, his interests never lessened. To C. O. Brumbaugh, the bank is most especially indebted. To all, however, a debt of gratitude is owing for many years of grtitous service.

The loyal support from a large list of stockholders and the Community in general, have contributed directly to the success of the bank, for without their support, the bank could not have been a success.

From a small beginning, the bank has grown steadily through the years until today, resources exceed \$800,000.00. As the purpose of the founders was a service to the Community, so today, our only purpose is how to serve the community and all our loyal patrons better.

The Officers and Directors and our many customers, join in extending to Mr. Frank R. King, congratulations for Fifty Years' service to the community in the printing field. It is in deep appreciation of this service that we wish for him many more years of good health in this, his favorite field of endeavor and trust that the work he has so well begun, may just be a beginning.

WANTED—ELECTRICITY

WANTED—Electricity. This cry came from the rural citizens living in Bedford, Huntingdon, and Fulton Counties. So in November 18, 1938, the NEW ENTERPRISE RURAL ELECTRIC COOPERATIVE, Inc., was incorporated and plans were made to bring light to the rural areas. Local capital was furnished and immediate construction was started under the direction of E. W. Van Horn, President and G. E. Gladfelter, Manager. The office was opened on the second floor of the Bank building July 17, 1939. By October 1, 1939, three hundred customers were receiving electric service. To date, September, 1944, eight hundred customers are receiving electric current. We aim to expand and to give satisfactory service to the rural citizens.

OFFICERS and DIRECTORS

E. W. Van Horn.....	President
G. E. Gladfelter.....	Vice-President
J. L. Guyer.....	Secretary
H. L. King.....	Treasurer
C. P. Holsinger	Carl Hoover
J. O. Appleman	Albert Leach
John H. Guyer	

CO-OPERATIVE PERSONNEL

G. E. Gladfelter.....	Manager
Pauline Over.....	Stenographer
C. P. Holsinger.....	Foreman
Glenn H. Ritchey.....	Lineman
Fred Houck.....	Lineman

We wish to express our gratitude and appreciation for your patronage and good will which has made possible the development of the Hardware and Plumbing Business in the Cove of which we are proud.

Trusting in the hope that the service we render will earn for us your continued confidence in the future.

IRA J. DETWILER

NEW ENTERPRISE

Phone Loysburg 5-R-22

Famous Waterman-Waterbury Hot Air Heating and Air Conditioning Equipment; Oil and Stoker Fired Automatic Heating

DEALER LINES—Fairbanks Morse and Co., De Laval Separator Co., Louden Machinery Co., Perfection Stove Co.

Majestic Ranges, Maytag Washers, Fairbanks Scales, Wire, Roofing, Cement, Lime, Plaster, Seeds, Rugs, Pipe, Motors, etc.

Congratulations!

TO FRANK R. KING ON 50
YEARS IN THE PRINTING
BUSINESS.

Your faithful service has been
a great aid in accomplishing the
progress our town has made in
the past century.

Bowser's Garage

NEW ENTERPRISE

GREETINGS!

W. D. BATTS

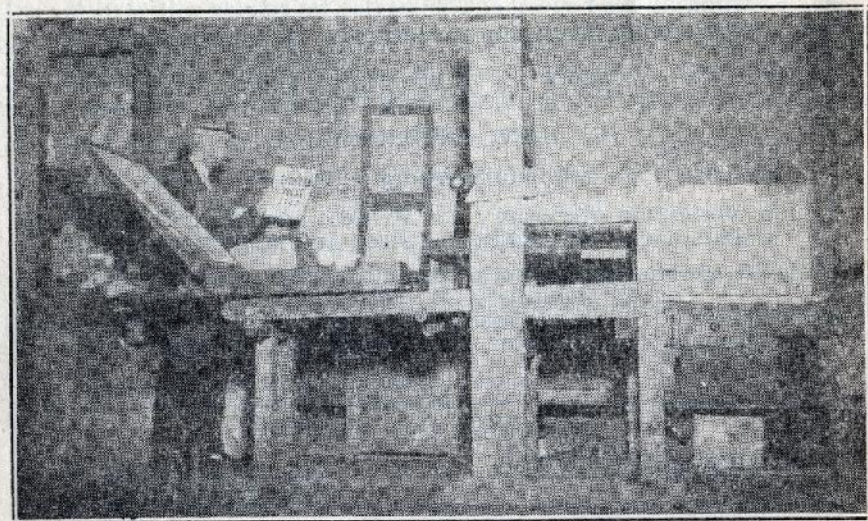
Up-to-Date Shoe Repair Shop

NEW ENTERPRISE

Below Ceiling Prices



Ephrata Press



Many thousand dollars of Continental Currency were printed on this press at Ephrata, Pa., during the Revolution. Other documents and books issuing from this famous press are now almost priceless and sought by the leading libraries of the world. It may be seen in the printing room of the Frank R. King Printing Co., New Enterprise, Pa.

(This border was used at Ephrata 200 years ago)



GREETINGS!

On these Anniversaries to all
who have helped to build our
community.

For General Repairing, Gas, Oil
and Accessories

... Call at ...

**KAGARISE'S
GARAGE**

NEW ENTERPRISE

FARM BUREAU Insurance Companies

AUTO - LIFE - FIRE

LIABILITY

... and ...

WORKMEN'S COMPENSATION

CONTRACTS

Elmer "Mike" Morrison

H. R. SNOBERGER

... Producer of ...

Fine Pennsylvania Potatoes and Apples

NEW ENTERPRISE

GREETINGS ON THIS ANNIVERSARY

With a feeling of thankfulness to the people of our town and community, we wish to express our appreciation of your patronage.

HOWARD BRUMBAUGH

General Merchandise

NEW ENTERPRISE

Here's Our Hand

To extend congratulations and good will on these anniversaries.

TEETER'S GARAGE

NEW ENTERPRISE

"Service with a Smile"

Always Glad to See
You

GREETINGS!

PAUL FETTER AND SON

NEW ENTERPRISE

WHOLESALE

POULTRY AND EGGS

20 Years in Business

GREETINGS!

ROSS M. CLAPPER

Commercial Photography

NEW ENTERPRISE

CLAPPER'S
BARBER SHOP

Open daily except Monday
In business Five and One-half
Years. Satisfaction Guaranteed.

NEW ENTERPRISE

R. FURRY

NEW ENTERPRISE

Custom Sawing, Circular Saw
Sharpening and Gumming.

NEW ENTERPRISE WATER CO.

The New Enterprise Water Co., was organized with its first directors meeting Nov. 28, 1934. The officers elected were as follows: President, C. O. Brumbaugh; Vice Pres., Ira J. Detwiler; Secretary, Paul I. Detwiler, Treasurer, H. F. Kagarise, Emmert Snider, W. A. King and Chalmer Clapper, Directors.

The W. P. A. furnished the labor for laying approximately 2 miles of water line and the building of two reservoirs at the foot of the mountain west of New Enterprise near the I. M. Ebersole property, while citizens furnished the money to purchase the materials.

At present the Water Co. is supplying approximately 104 customers, including 19 farms, 84 residences and the South Woodbury Twp. Schools.

The village of New Enterprise and vicinity indeed has been very fortunate in having the privilege of using mountain water which is far superior to well and rain water which customers had been using in previous years.

The present officers are: President, Ira J. Detwiler; Vice Pres., Howard Brumbaugh; Secretary, Paul I. Detwiler; Treasurer, H. F. Kagarise; and Emmert Snider, Director.

Congratulations!

A. P. BAKER

DAIRYING

Short and Long Distance

FREIGHT HAULING

NEW ENTERPRISE

J. W. FURRY

Drayman

NEW ENTERPRISE

GREETINGS

CYRUS FURRY

DAIRY FARM

NEW ENTERPRISE

ARTHUR
L. REPLOGLE

BUILDER

NEW ENTERPRISE

We are proud to have contributed our service in building and remodeling many of the buildings in our up-to-date town.

PLEASE REGISTER

The historic Ephrata Press will remain in this community at least to the end of 1944.

A register of callers is ready for your signature. 1,000 names are desired. This list will accompany the press wherever it is placed.

Please call and register at your convenience. We will appreciate the signature of every person in this community and all others possible.

FRANK R. KING.

Compliments of

S. F. DETWILER

FREIGHT AND

GENERAL HAULING

NEW ENTERPRISE

FARM BUREAU CO-OPERATIVE

BLAIR SNYDER, Distributor
PETROLEUM PRODUCTS

GREETINGS

... from ...

D. P. HOOVER

**RELIABLE INSURANCE
RELIABLE COMPANIES
Phone Loysburg 10-R-5
NEW ENTERPRISE**

Aerial View of New Enterprise, Pa.

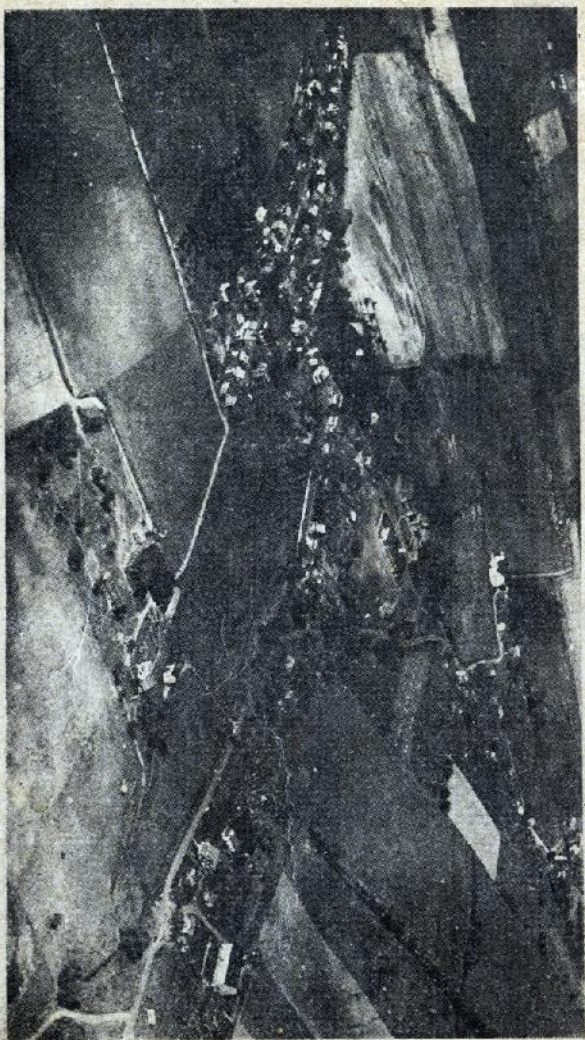


Photo by Ross M. Clapper